

FOR LEASE

Owned and Operated by  **LINK**

HARRISBURG DISTRIBUTION CENTER

181 Fulling Mill Road, Middletown, PA



±53,135 SF

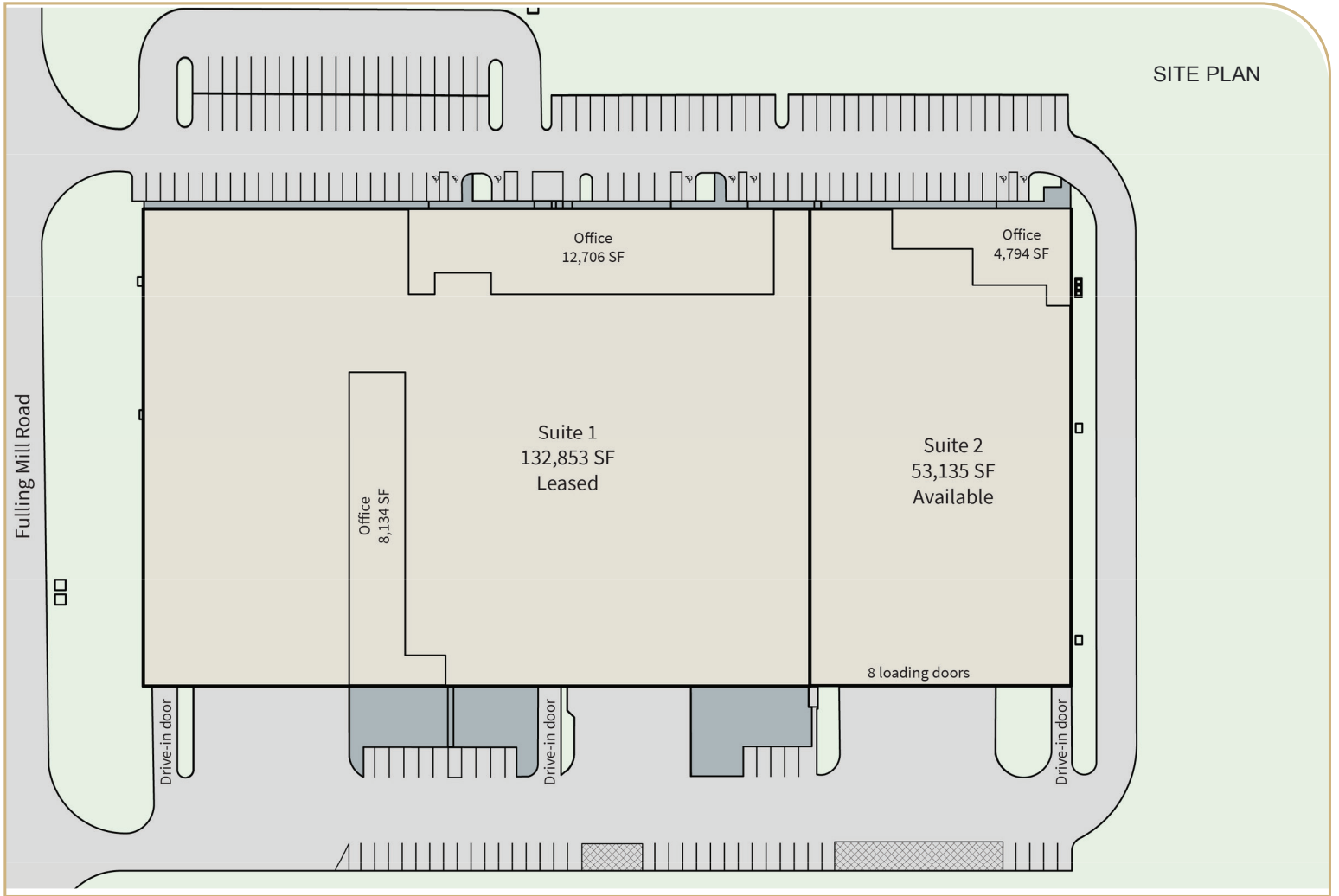


**LEASING INFO
& CONTACT**

Ryan Barros	(610) 249-2264 / ryan.barros@jll.com
Maria Ratzlaff	(717) 791-2210 / maria.ratzlaff@jll.com
Jeff Lockard	(215) 990-1889 / jeff.lockard@jll.com
Kevin Lammers	(610) 249-2255 / kevin.lammers@jll.com



This is not an offer or acceptance of an offer to lease space. A lease will only be offered or made in a written agreement signed by landlord. No representation or warranty of any kind is made by landlord unless set forth in a written definitive lease executed by the landlord.



SITE PLAN

BUILDING SPECIFICATIONS

Building Size:	185,988 SF	Drive-In Doors:	One (1) 12' x 14' drive-in
Available Size:	53,135 SF	Car Parking:	38 parking spaces
Dock Doors:	Eight (8) 9' x 10' loading doors equipped with mechanical levelers, bumpers and lights	Sprinkler:	ESFR system
Clear Height:	28' clear height	Lighting:	LED lighting
Column Spacing:	50' x 50' typical	Construction Year:	1999
Office Size:	4,794 SF	Loading Configuration:	Single-side load



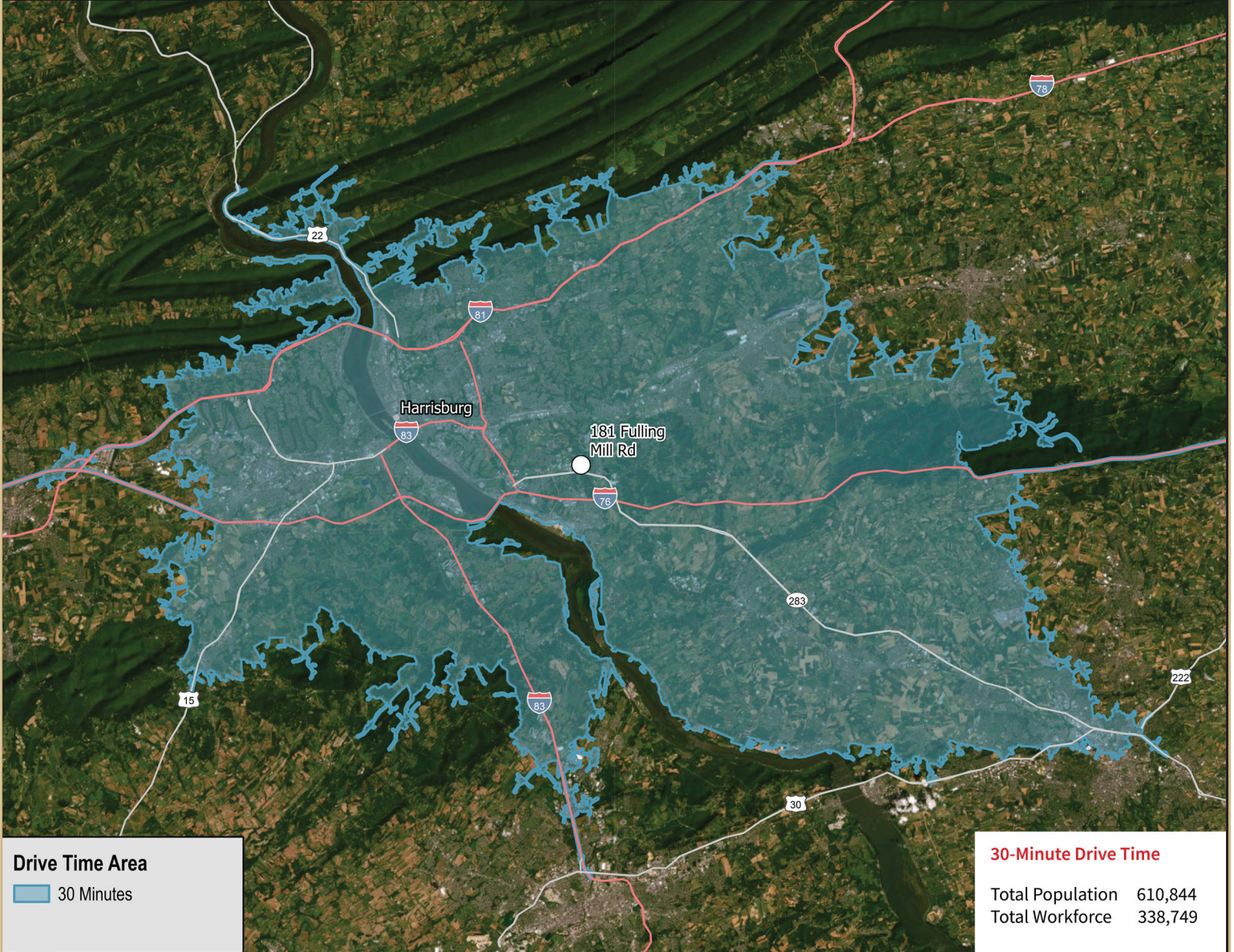
CORPORATE NEIGHBORS

- | | |
|-----------------------|------------------------|
| 1. UPS Regional Hub | 13. Iron Mountain |
| 2. IPEX | 14. Phoenix Contact |
| 3. Lennox | 15. FedEx Freight |
| 4. Moran Logistics | 16. Lowes |
| 5. Hersheys | 17. Syncreon (DELL) |
| 6. Fedex Freight | 18. D&H Distributing |
| 7. PODS | 19. Corteva |
| 8. Legrand | 20. XPO Logistics |
| 9. Schneider Electric | 21. Boxzooka |
| 10. Swanson Health | 22. Brand Fox |
| 11. Pratt & Whitney | 23. Allen Distribution |
| 12. FedEx Ground | |

INTERMODAL & PARCEL FACILITIES

- | | |
|-----------------------------------|------------|
| FedEx Ground (Middletown): | Adjacent |
| FedEx Freight (Middletown): | 0.5 Miles |
| UPS (Middletown): | 1 Mile |
| Harrisburg International Airport: | 4 Miles |
| Norfolk Southern (Rutherford): | 8.5 Miles |
| UPS (Harrisburg): | 9.5 Miles |
| USPS (Harrisburg): | 13.5 Miles |
| FedEx Ground (Lewisberry): | 14 Miles |
| Norfolk Southern (Harrisburg): | 14 Miles |

LABOR OVERVIEW



FOR MORE INFORMATION, PLEASE CONTACT:

Ryan Barros
(610) 249 2264
ryan.barros@jll.com

Maria Ratzlaff
(717) 791 2210
maria.ratzlaff@jll.com

Jeff Lockard
(215) 990 1889
jeff.lockard@jll.com

Kevin Lammers
(610) 249 2255
kevin.lammers@jll.com

JLL | 550 E Swedesford Road, Suite 260 | Wayne, PA 19087

